

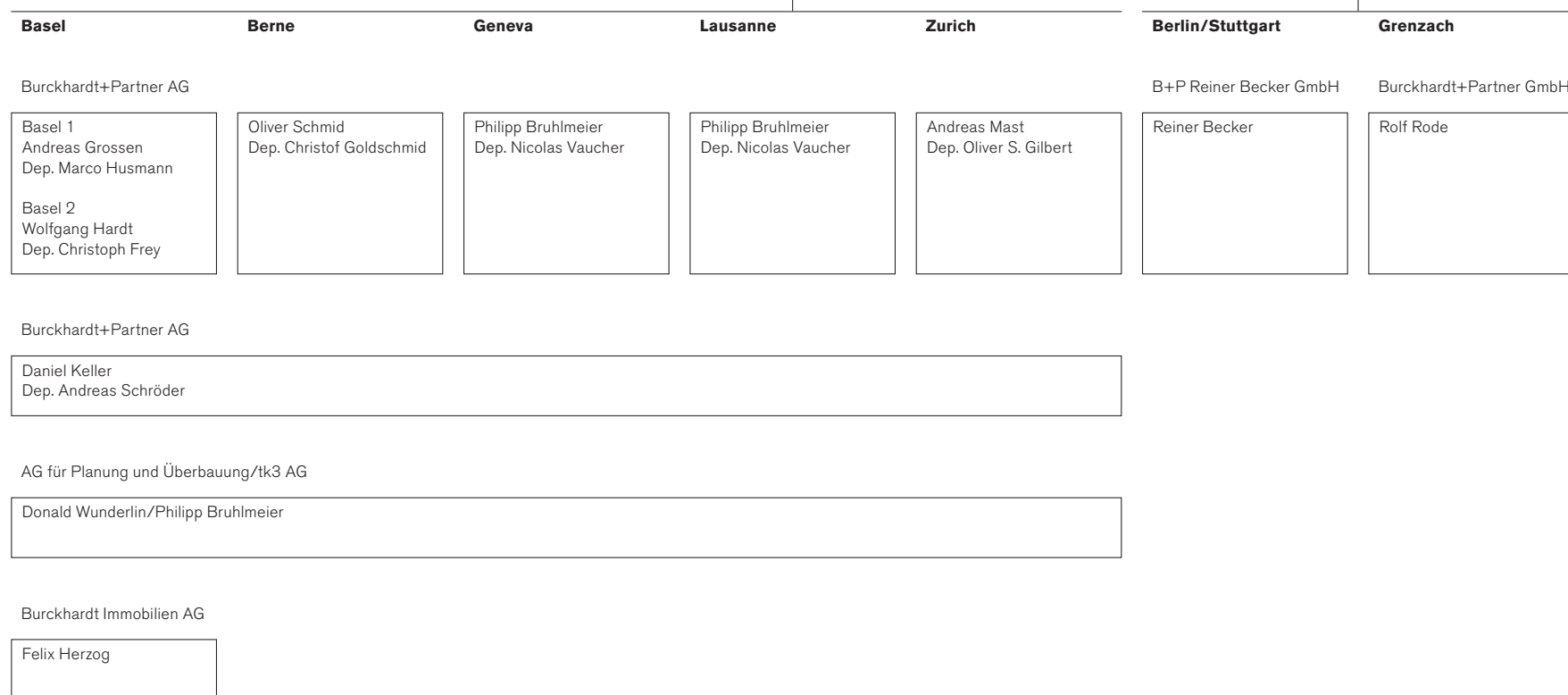
# Organigram and figures

## Burckhardt+Partner

**Board of directors**  
 Philipp Bruhlmeier, Chairman  
 Samuel Schultze, Delegate  
 Hans-Rudolf Blöchliger, Barbara Hayoz, Heinrich Moser, Gert Thoenen

**Company management**  
 Samuel Schultze, CEO  
 Philipp Bruhlmeier, Deputy  
 Andreas Grossen, Wolfgang Hardt, Daniel Keller, Andreas Mast, Oliver Schmid

<b>Finance</b> Christian Hirt	<b>Marketing</b> Samuel Schultze
<b>HR</b> Karin Isler	<b>IT</b> Thomas Hauser



Turnover in CHF (m)	2013	2014	2015	2016	2017
Architecture, General planning, Project development	66.6	75.1	79.1	72.2	<b>78.5</b>
Own building projects	20.8	30.4	34.0	23.9	<b>20.4</b>
Sales, Property management	3.6	3.5	4.5	3.9	<b>3.6</b>
Eliminations*	-5.2	-7.0	-4.9	-7.1	<b>-5.5</b>
<b>Total turnover</b>	<b>85.8</b>	<b>102.0</b>	<b>112.7</b>	<b>92.9</b>	<b>97.0</b>
Manpower as at 31.12.	315	335	336	360	370

\*The eliminations consist of internal service charges